

# WATER SERVICE LINE INVENTORY

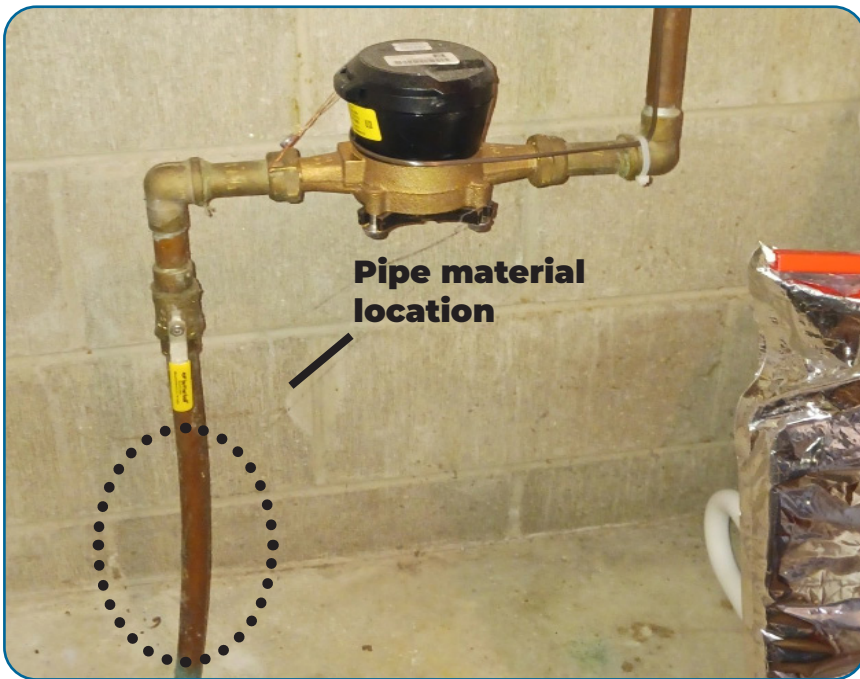


## City of Fairfax

**\*\*IMPORTANT\*\*** This water service line inventory is mandatory. Please scan the QR code to complete this form and attach a picture similar to the one shown below. If not completed the City will need to visit your home or business to do this survey. Complete the survey below using the QR code or by filling out the form and returning it to city hall. Please complete by May 31st, 2024 or a field inspection will be scheduled.

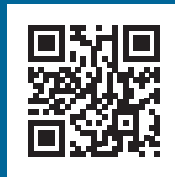
The City of Fairfax is required to complete an inventory of all service line within the water system. The goal of the inventory is to identify the material type of each service line, with the ultimate goal to remove all lead service lines. This inventory is required by the US Environmental Protection Agency and is scheduled to be completed by June 2024.

**What is a service line?** A service line is the pipe connecting the water main to the interior plumbing in a building. A lead service line is a service line made entirely or partially from lead. You can identify your pipe material by checking your household water services connections inside your home, typically located in your basement. See photo above for reference.



### WE NEED YOUR HELP!

We are asking residents to perform a water service line material survey to ensure the most accurate inventory. Please scan QR code or follow link for more information:



[arcg.is/100LuT0](https://arcg.is/100LuT0)

While Fairfax treats and tests water to make sure that it is lead-free when it leaves the treatment facilities and travels through the watermains, some older homes (built prior to 1986) in our community have lead service lines, household plumbing materials and faucets.

### Replacement Opportunities

We expect grant dollars to be available to help residents replace lead or galvanized service lines in the future. It is important that this inventory gets completed with your help, so that we can get organized for those future grant opportunities. More information will be available after the inventory is complete.

If you have any questions regarding the inventory or do not feel comfortable filling out the inventory by yourself, please reach out to city hall.

[health.state.mn.us/communities/environment/water/lsrprogram.html](https://health.state.mn.us/communities/environment/water/lsrprogram.html)

# Types of Water Pipes

Use the guide below to determine your water pipe material.

## LEAD

A dull, silver-gray color that is easily scratched with a coin. Use a magnet to detect the material – strong magnets will not cling to lead pipes.



## GALVANIZED

A dull, silver-gray color. Use a magnet to detect the material – strong magnets will typically cling to galvanized pipes.



## PLASTIC

Blue or black pipe.



## COPPER

The color of a penny.



You can identify your pipe material by checking your household water service connections inside your home, typically located in your basement. Use the guide below to determine your water pipe material.

Once you determine your pipe material, complete the inventory in one of the following ways:



1. Complete the online version by scanning the QR code or following the URL



2. Take the survey found below and return the survey and a photo of your water service line to Fairfax City Hall, **(18 1st Street SE, PO Box K, Fairfax, MN 55332)**.



3. Take the survey found below, take a photo of your water service line to scan and email to Shane Traulich at **shane.traulich@bolton-menk.com**.

## RESIDENT INFORMATION

First Name: \_\_\_\_\_ Last Name: \_\_\_\_\_

Phone Number: \_\_\_\_\_ Email: \_\_\_\_\_

Property Address: \_\_\_\_\_

## PIPE INFORMATION

Based on the appearance, testing, or existing records, please select the appropriate material of your service line.

Material:     Lead     Galvanized     Plastic     Copper     Unknown

How did you determine the material of your service line?

Source Information:     Visual Inspection     Plumbing Records     Scratch Test



Scan here or visit: [arcg.is/100LuTO](https://arcg.is/100LuTO) to take the survey online